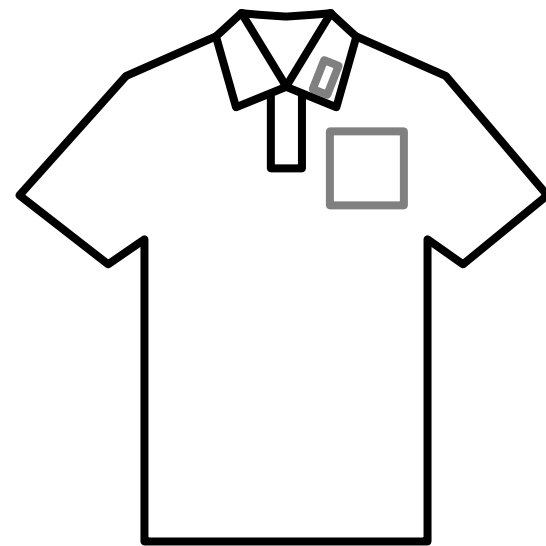


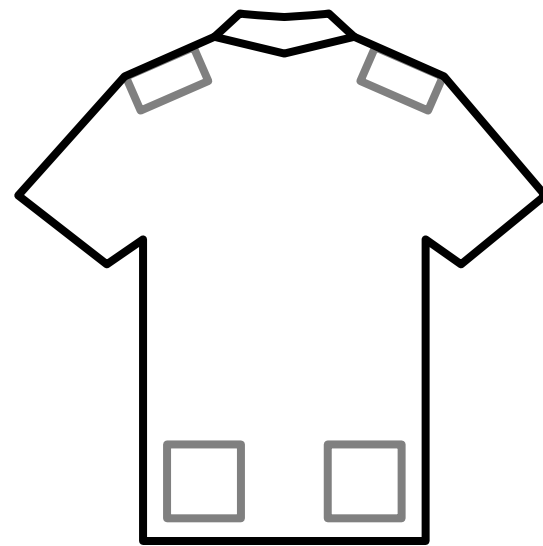
EMBROIDERY



On Collar
1"H x 3 1/2" W

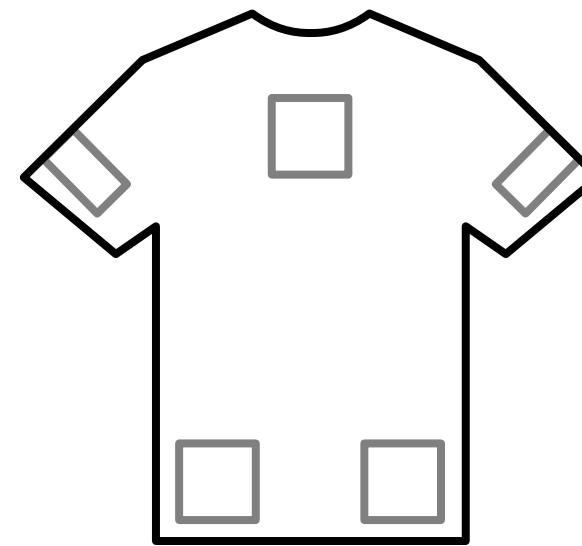
Left Chest
Men's Max Size: 5.5" W
Women's Max Size: 4.5" W

Collar Tip
Men's Max Size: 1" H
Women's Max Size: 1" H



Left/Right Back Shoulder
Max Size: 4.5" W

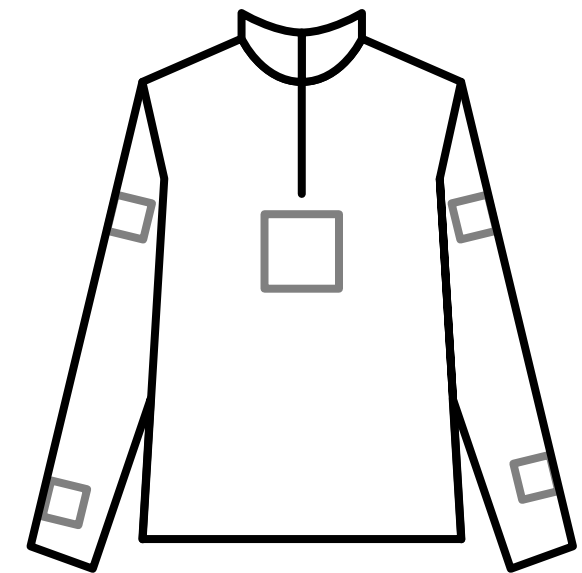
Left/Right Back Hip
5.5" W



Upper Center Chest
Men's Max Size: 6" W

Left/Right Above Cuff
Men's Max Size: 3.5" W
Women's Max Size: 2.5" W

Left/Right Hip
Women's Max Size: 5.5" W



Left/Right Biceps
Men's Max Size: 3.5" W
Women's Max Size: 3.5" W

Below Zipper
Max Size: 5.5" W

Left/Right Above Cuff
Men's Max Size: 3.5" W
Women's Max Size: 3.5" W

EMBROIDERY

Continued



Left/Right Shoulder

Max Size: 4.5" W

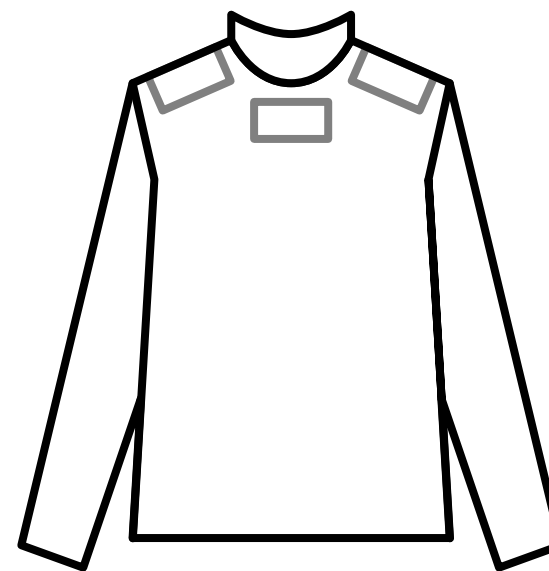
Vertical Along Zipper

Max Size: 9" H



Above Shoulder Seam

Men's Max Size: 4.5" W x 3" H
Women's Max Size: 4.5" W x 3" H



Left/Right Back Shoulder

Max Size: 4.5" W

Back Yoke

Men's Max Size: 5.25" W x 1.5" H
Women's Max Size: 5.25" W x 1.5" H
Lined outerwear max size: 3.5" W x 1.5" H



Center Pocket

Max Size: 1.5" diameter

Top Center Pocket

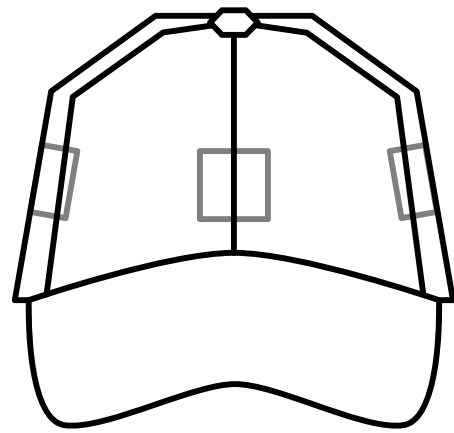
Max Size: .75" H

Top Left/Right Pocket

Max Size: .75" H

EMBROIDERY

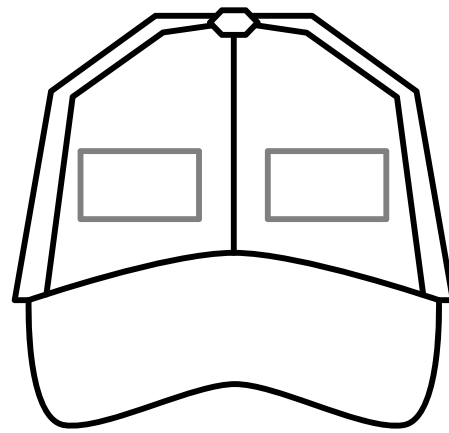
Continued



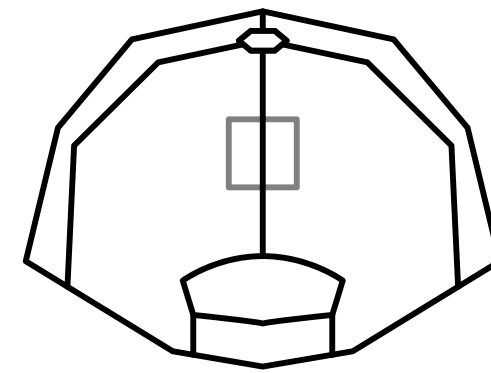
Front of Cap
Max Size: 2" - 2.5" W*

Left/Right Side Hat
Max Size: 2" - 2.5" W*

**subject to design & approval*

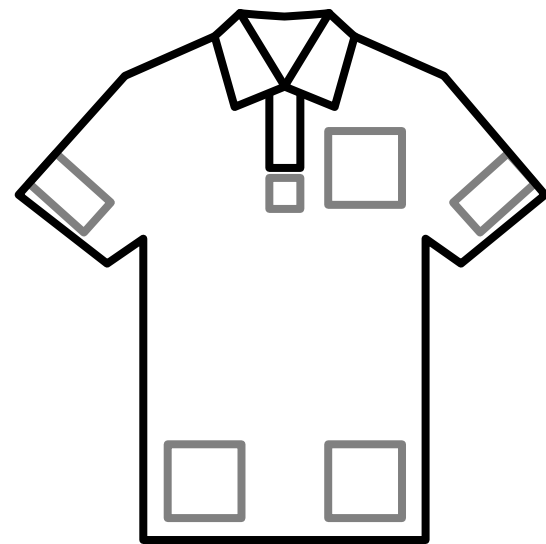


Lower Left/Right Front Panel
Max Size: 2.5 - 2" H



Back Hat
Max Size: 3.5" W x 1.5" H

LASER ETCH

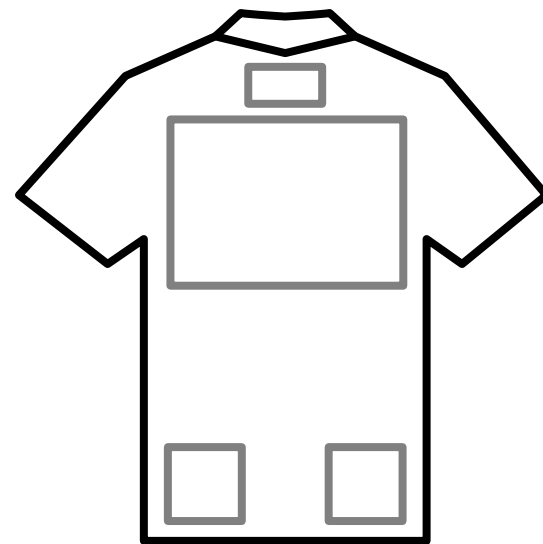


Left Chest
Max Size: 5.5" W

Left/Right Above Cuff
Up to 4" W

Under Placket
5.5" W

Left/Right Front Hip
5.5" W



Back Yoke
Up to 18" W

Full Back
Up to 26" W

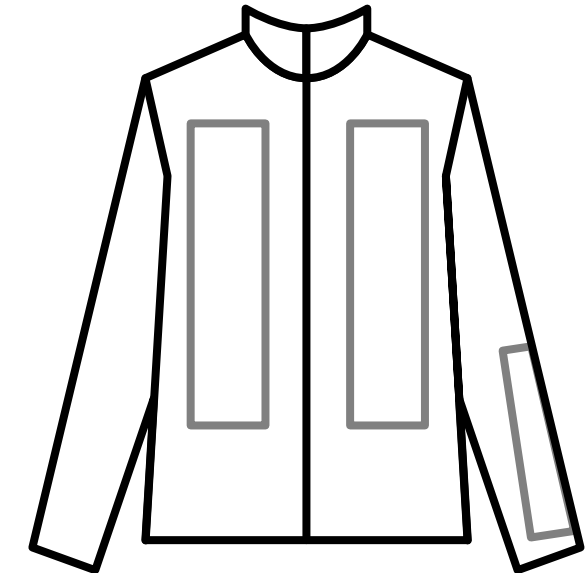
Left/Right Back Hip
Up to 26" W



Left/Right Shoulder
Max Size: 4.5" W

Left/Right Biceps
Up to 5" W

Vertical Along Zipper
7" W

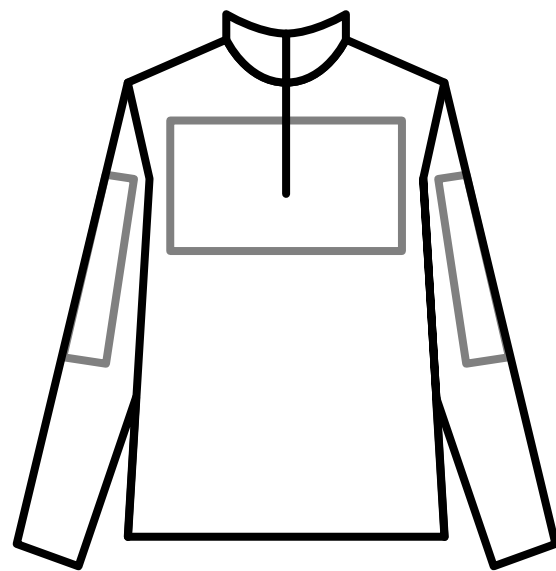


Vertical Left/Right Chest
Men's Max Size: 4" W x 12"
Women's Max Size: 4" W x 10" H

Vertical Sleeve Forearm
Max Size: 3 1/2" W x 7" H

LASER ETCH

Continued

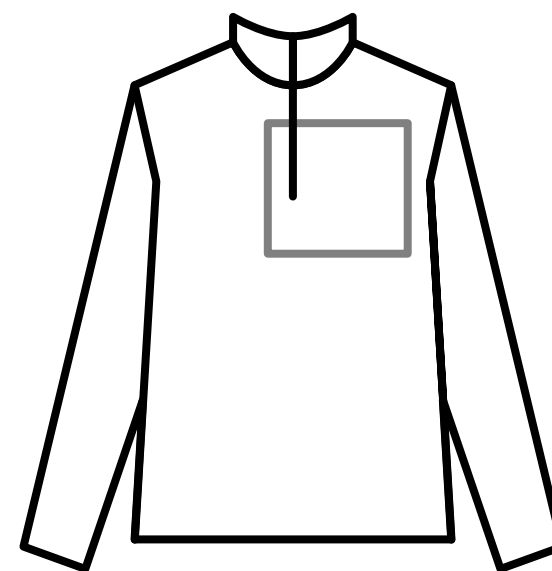


Split Front Full Chest
14.5" W

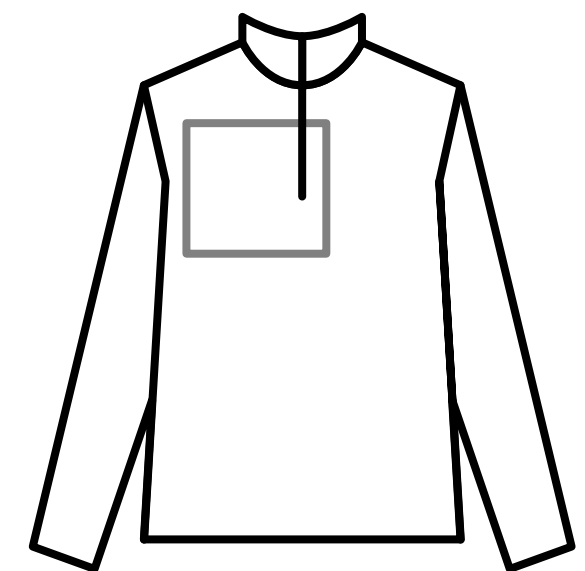
Vertical Sleeve Biceps
3 1/2" W x 15" H



Side Wrap
Up to 26" W

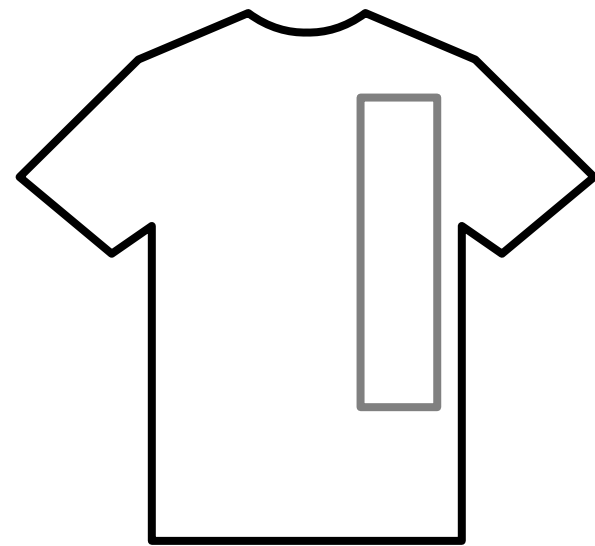


Oversized Left Chest
9" W

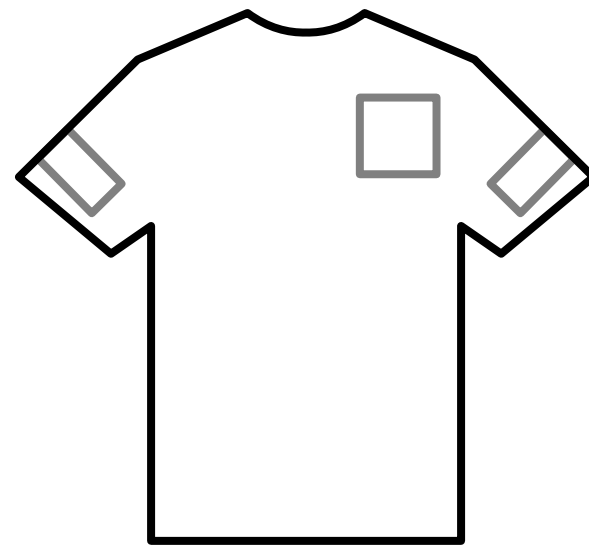


Oversized Right Chest
9" W

SCREEN PRINTING

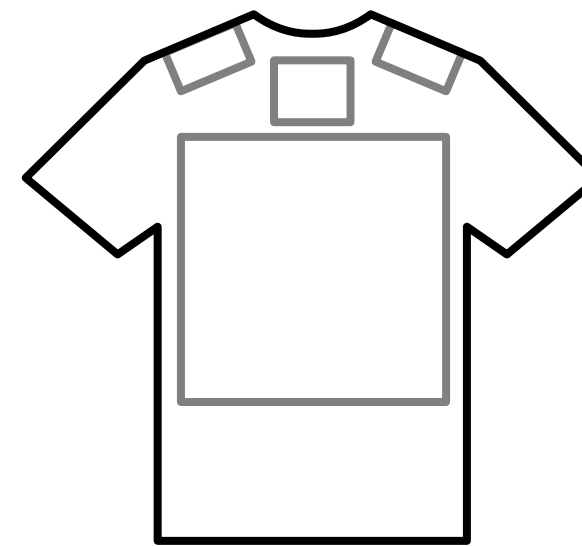


Vertical Left Chest
Max Size: 4" W x 16" H



Left Chest
Men's Max Size: 5.5" W
Women's Max Size: 4" W

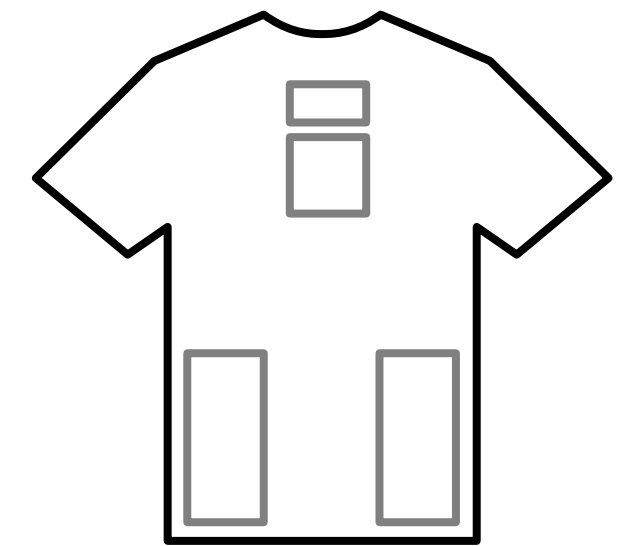
Left/Right Front Hip
Max Size: 3" W x 3" H



Back Yoke
Max Size: 4" W

Left/Right Back Shoulder
Men's Max Size: 4" W
Women's Max Size: 3" W

Full Back
Men's Max Size: 14" W
Women's Max Size: 11" W



Upper Center Chest
Men's Max Size: 6" W
Women's Max Size: 4" W

Center Chest
Men's Max Size: 7" W
Women's Max Size: 5" W

Left/Right Hip
Men's Max Size: 9" H
Women's Max Size: 6" H

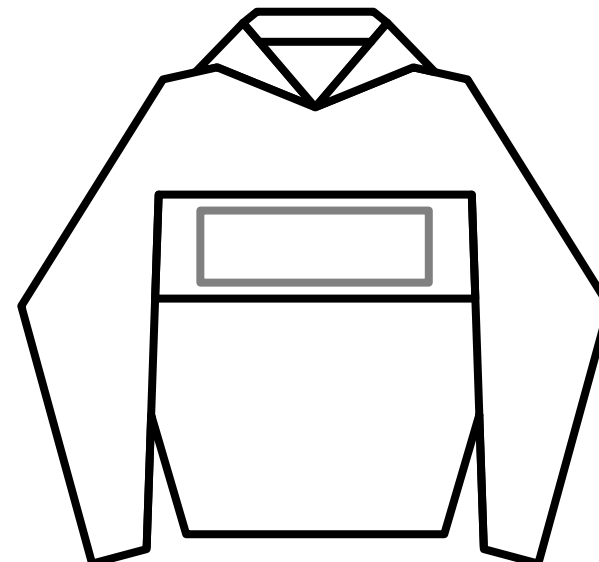
SCREEN PRINTING

Continued

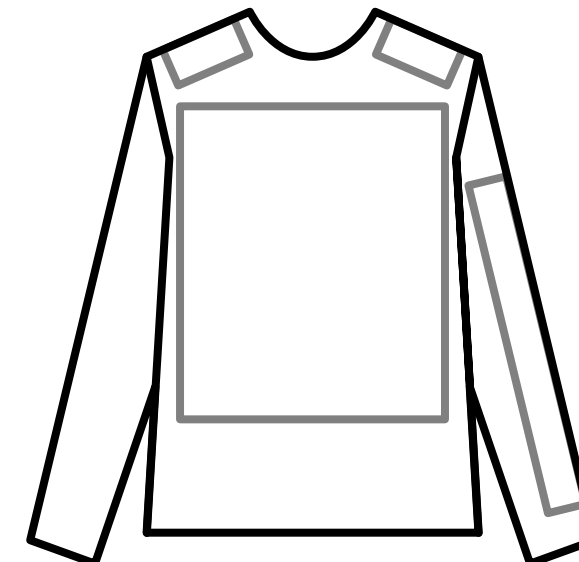


Full Chest Across Zipper
 Men's Max Size: 14.5"W
 Women's Max Size: 10" W
 (w/distress, no underlay)

Vertical Sleeve Forearm
 3.5" W x 7" H



Center Chest Block
 Max Size: 3" H x 12" W

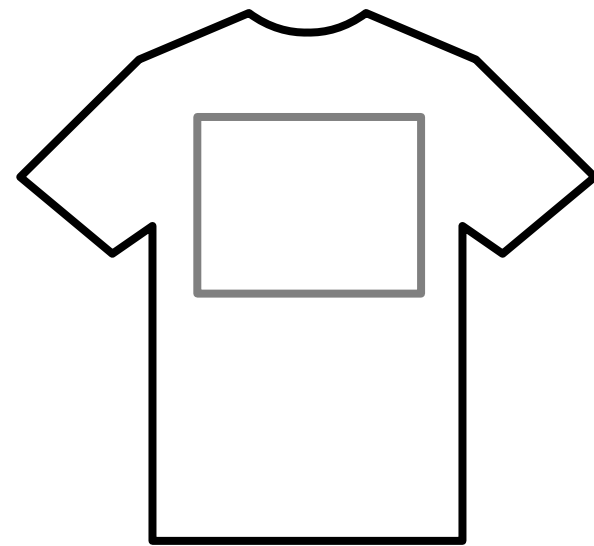


Left/Right Shoulder
 Men's Max Size: 4" W
 Women's Max Size: 3" W

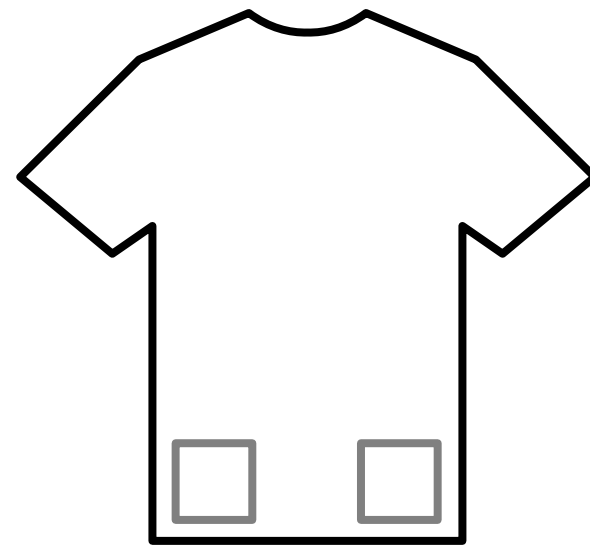
Full Chest
 Men's Max Size: 14.5" W
 Women's Max Size: 10" W

Vertical Sleeve
 Max Size: 3.5" W x 15" H

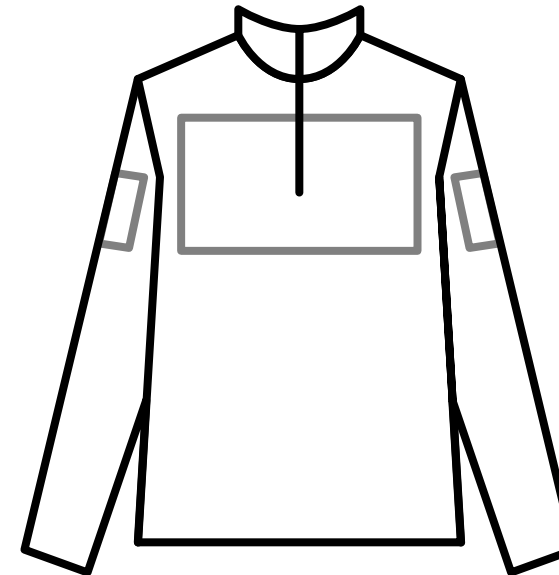
APPLIQUÉ



Full Back
Max Size: 14.5" W x 11.75" H



Left/Right Front Hip
5.5" W



Full Chest
Max Size: 14.5" W x 11.75" H

Left/Right Biceps
Men's Max Size: 4.5" W
Women's Max Size: 3.5" W



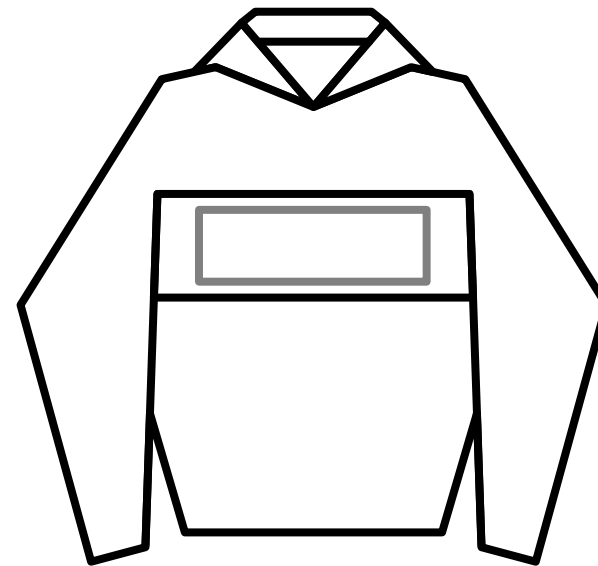
Left/Right Vertical Sleeve
Max Size: 2" W x 10" H

APPLIQUÉ

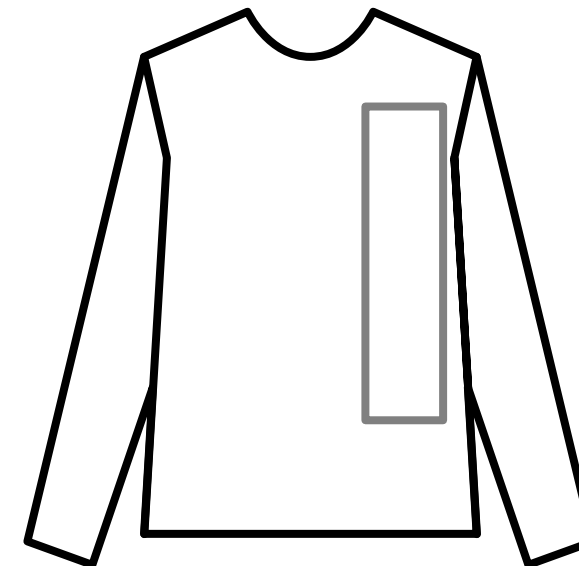
Continued



Left Chest
Men's Max Size: 5.5" W
Women's Max Size: 4.5" W

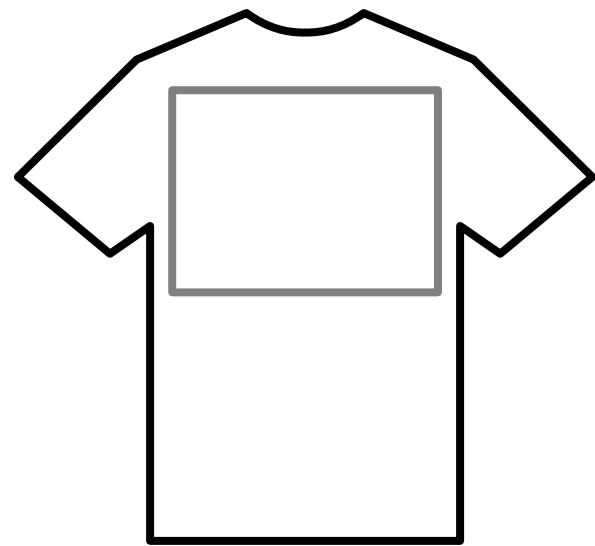


Center Chest Block
Max Size: 3.5" H x 13.5" W

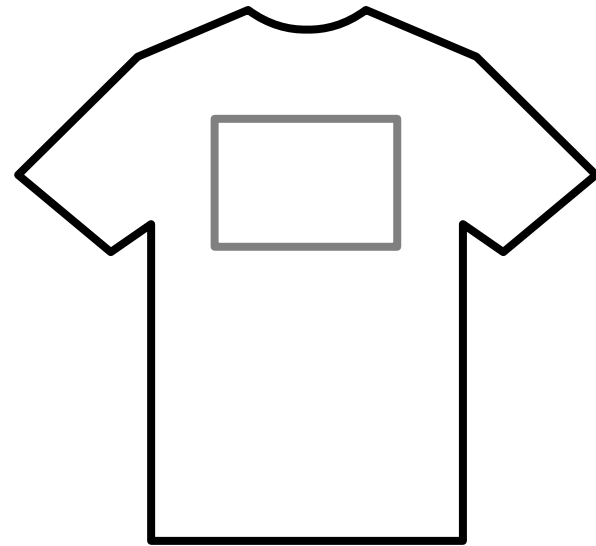


Vertical Left Chest
Men's Max Size: 4" W x 11.75" H
Women's Max Size: 4" W x 10" H

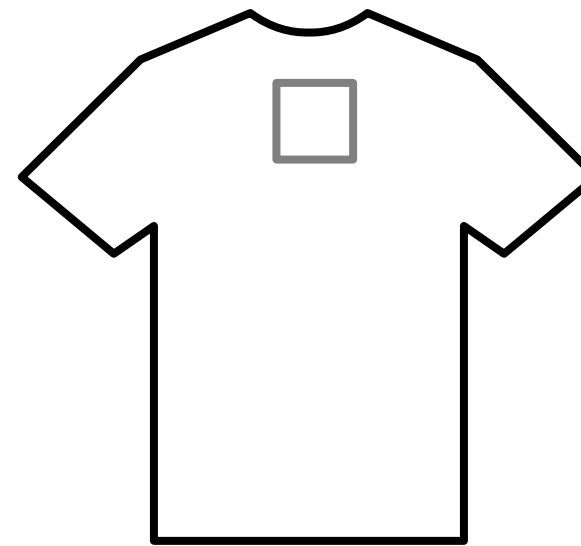
SEQUIN EMBROIDERY



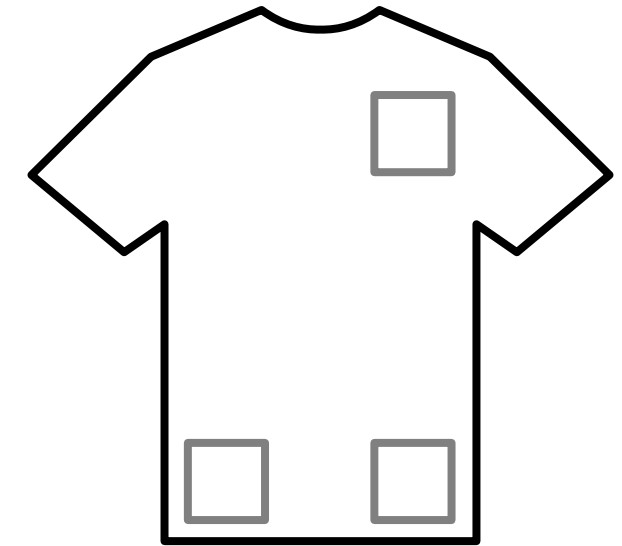
Full Back
Max Size: 14.5" W x 11.75" H



Full Chest
10.25" W



Upper Center Chest
5.5" W

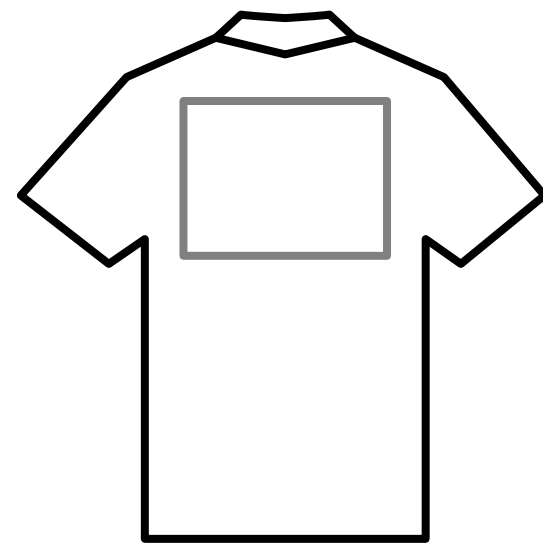


Left Chest
4.5" W

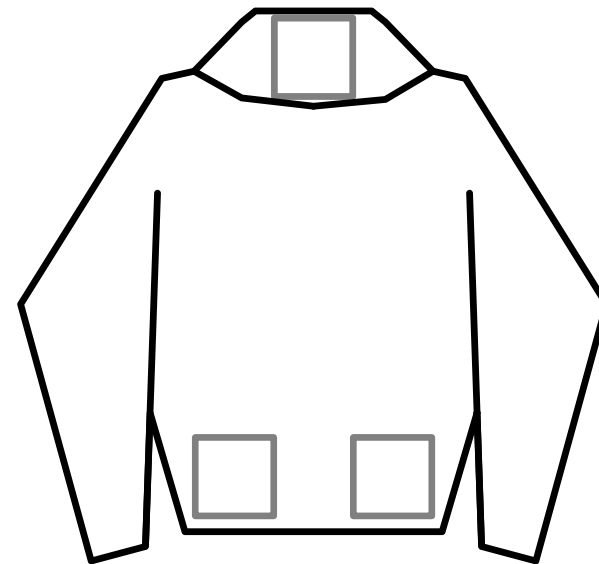
Left/Right Hip
4.5" W

SEQUIN EMBROIDERY

Continued

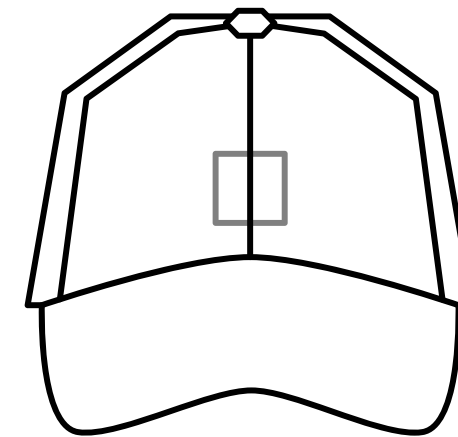


Full Back
10.25" W



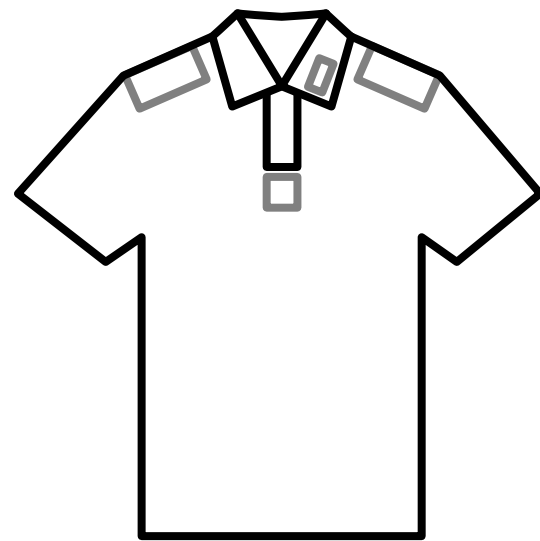
Top Hood
5.5" W

Left/Right Back Hip
5.5" W



Front of Cap
Max Size: 2" - 2 1/2" H
subject to design and approval

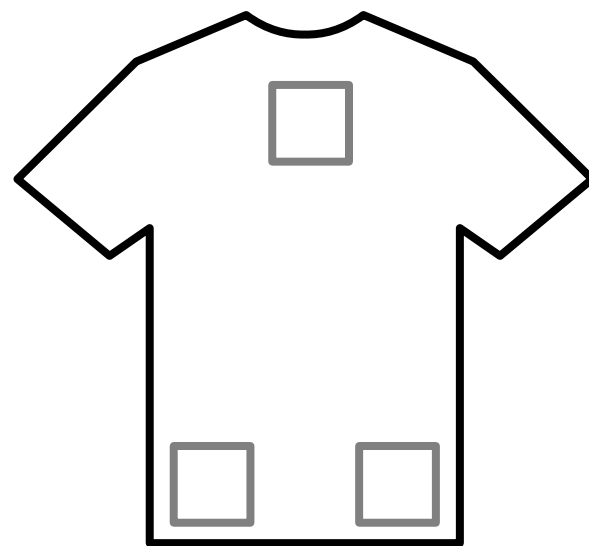
DIRECT TO FILM



Left/Right Shoulder
Men's Max Size: 4" W
Women's Max Size: 3" W

Under Placket
5.5" W

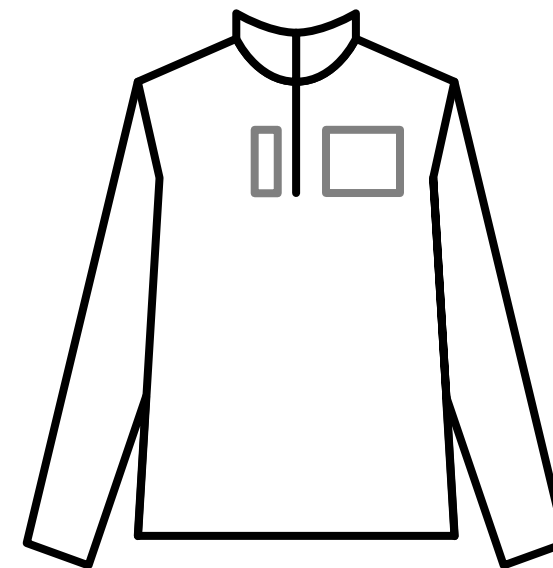
On Collar
1"H x 3.5" W



Upper Center Chest
3" W

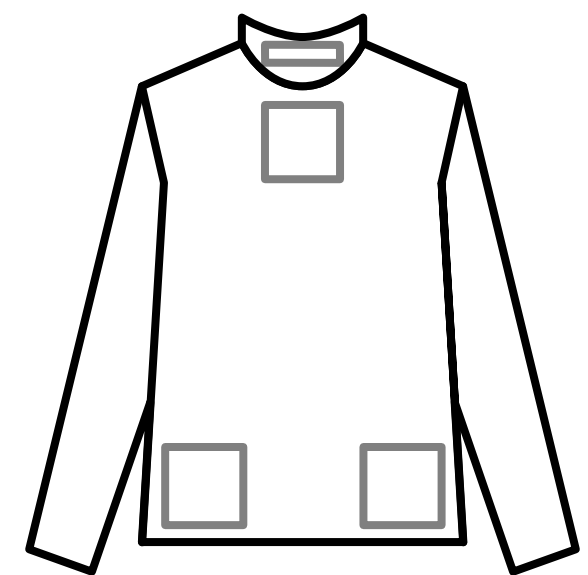
Left/Right Above Cuff
3"H x 3" W

Left/Right Front Hip
5.5" W



Left Chest
Men's Max Size: 5.5" W
Women's Max Size: 4" W

Vertical Along Zipper
4.5" W



Back Yoke
4" W

Back Collar
5.5" W

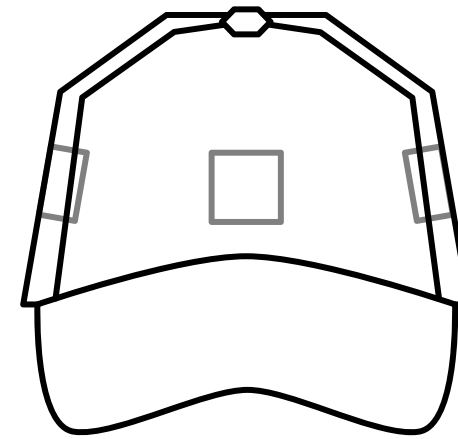
Left/Right Back Hip
Max Size: 5.5" W

DIRECT TO FILM

Continued



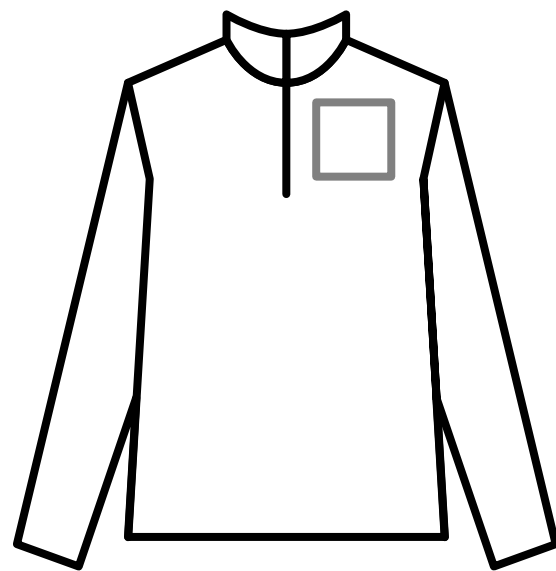
Top Hood
5.5" W



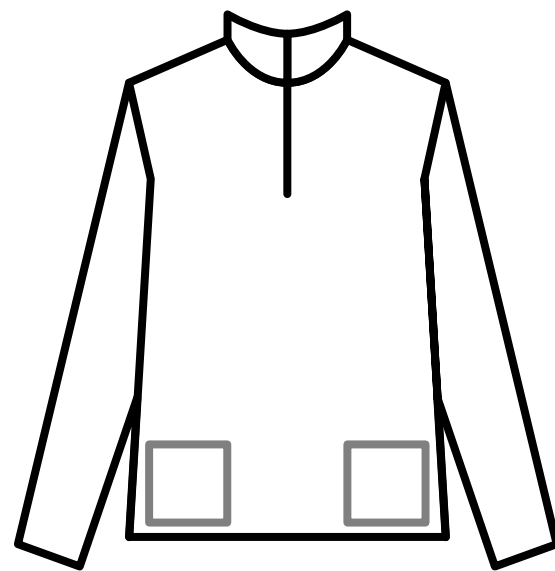
Front of 5-Panel Cap
Max Size: 2" - 2.5" H

L/R Side of 5-Panel Cap
Max Size: 2" - 2.5" H

TECH PATCHES



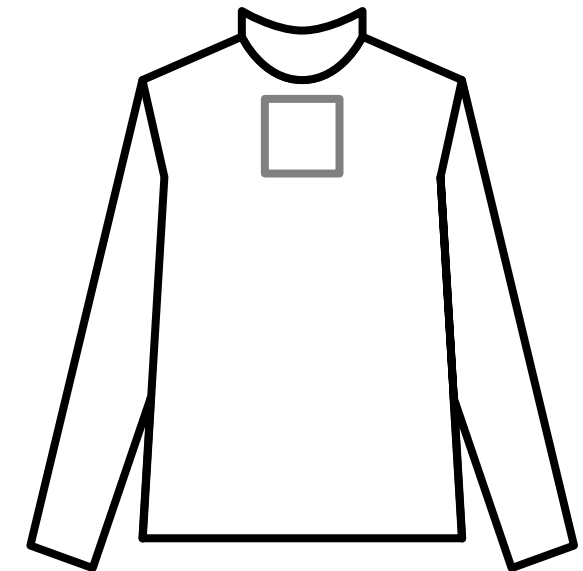
Left Chest
 Men's Max Size: 4" W
 Women's Max Size: 4" W



Left/Right Hip
 4" W



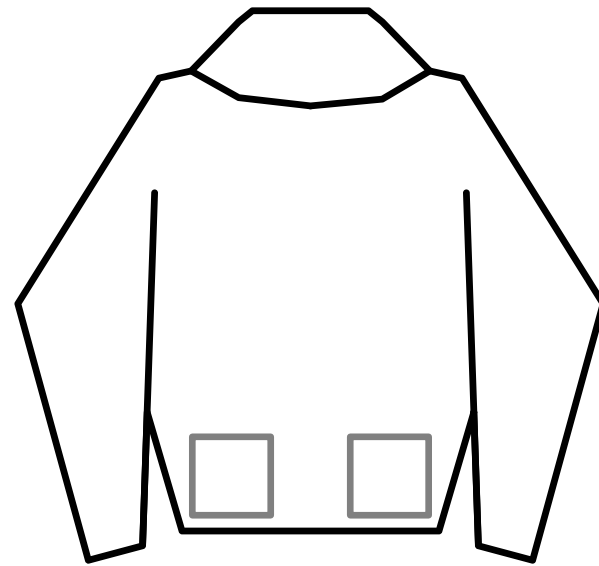
Left/Right Biceps
 Men's Max Size: 4" W
 Women's Max Size: 4" W



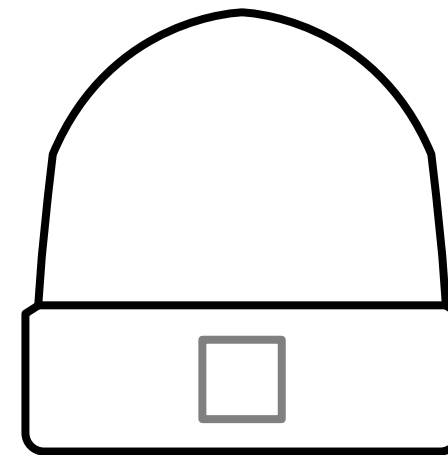
Back Yoke
 Men's & Women's Max Size: 4" W x 3" H
 Men's w/Locker Patch: 4" W x 2" H
 Women's w/Locker Patch: 4" W x 1.25" H

TECH PATCHES

Continued



Left/Right Back Hip
4" W



Front Hat
Max Size: 1.25" H - 2.5" W